



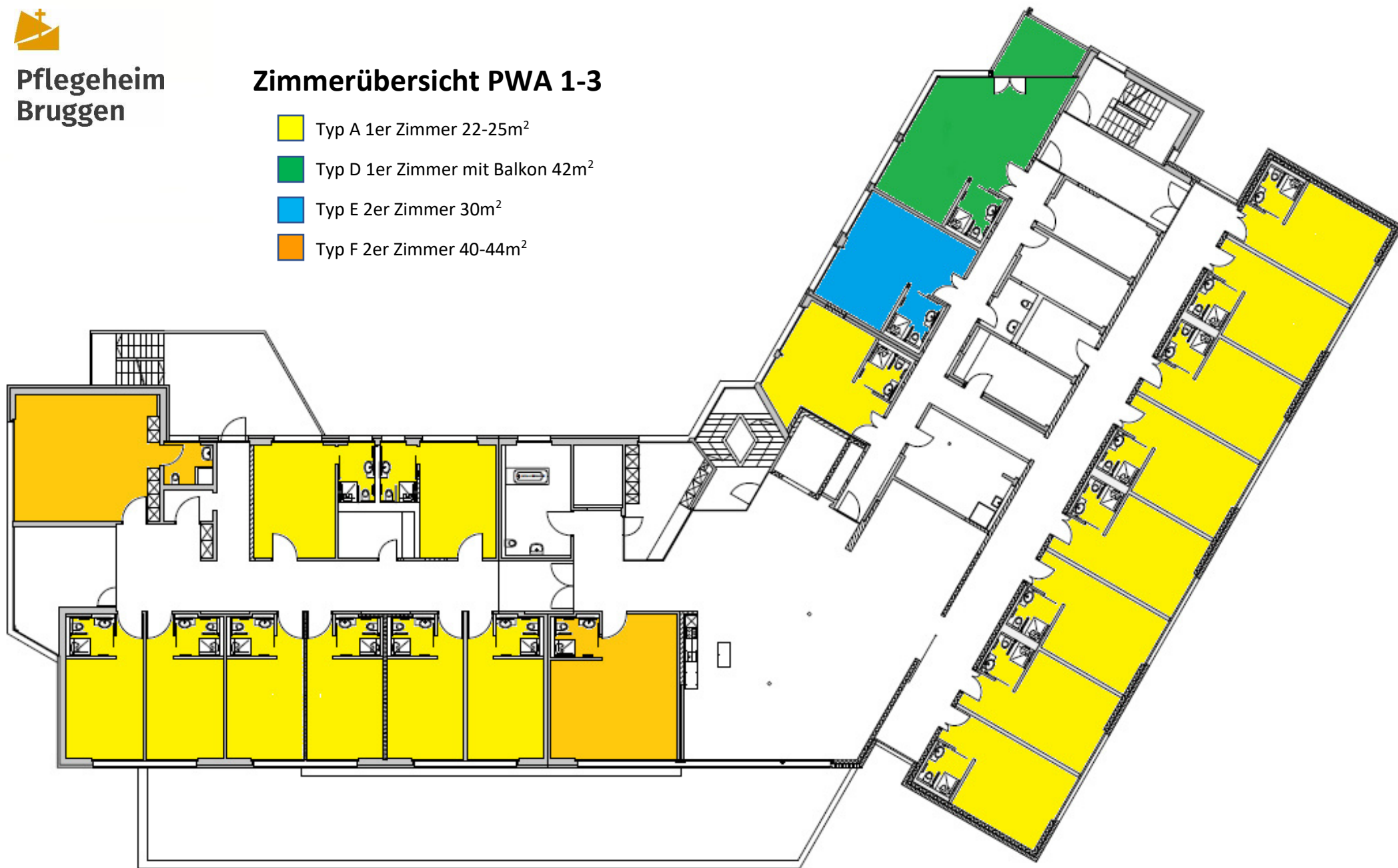




# Pflegeheim Bruggen

## Zimmerübersicht PWA 1-3






-  Typ A 1er Zimmer 22-25m<sup>2</sup>
-  Typ D 1er Zimmer mit Balkon 42m<sup>2</sup>
-  Typ E 2er Zimmer 30m<sup>2</sup>
-  Typ F 2er Zimmer 40-44m<sup>2</sup>

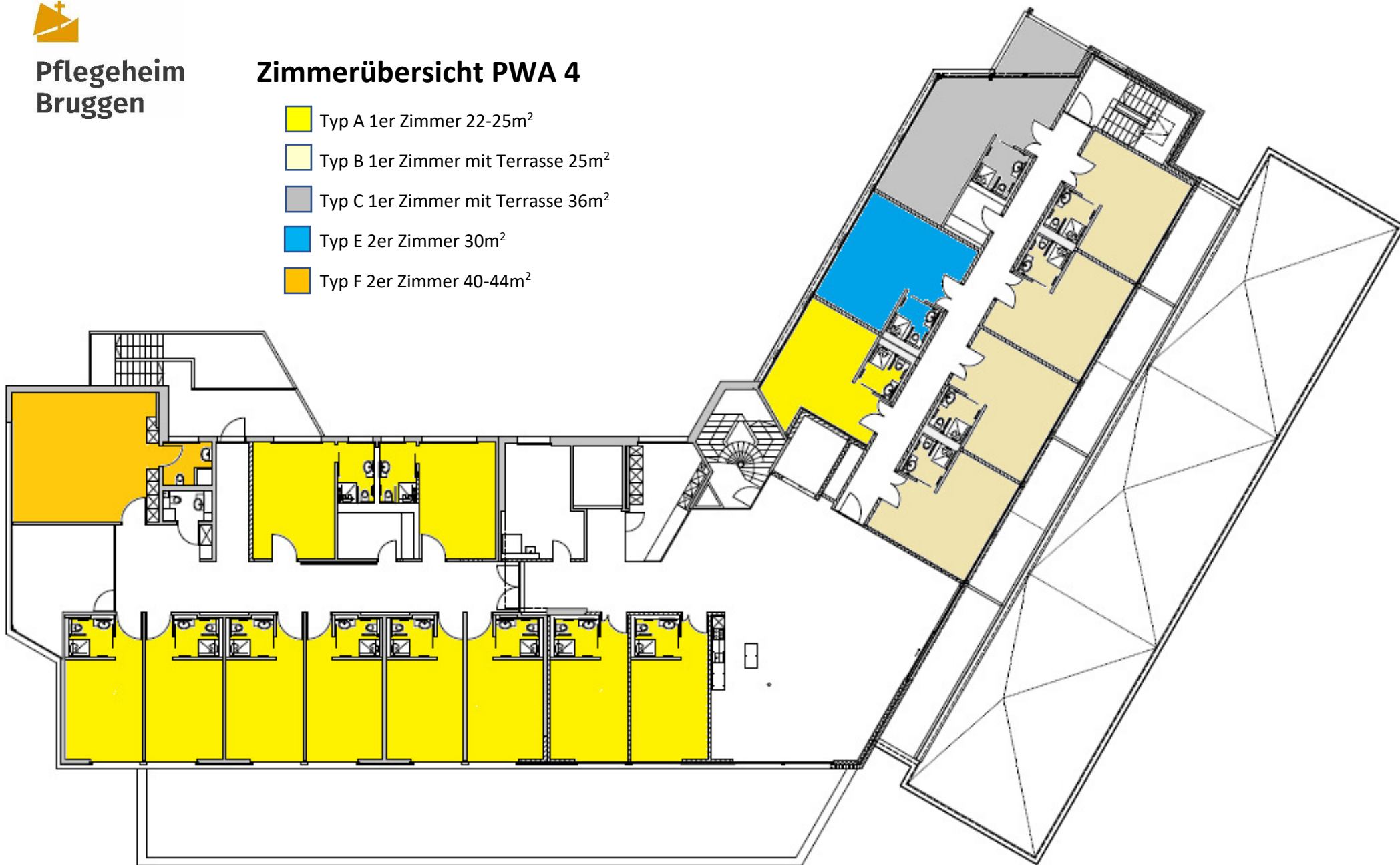




# Pflegeheim Bruggen

## Zimmerübersicht PWA 4

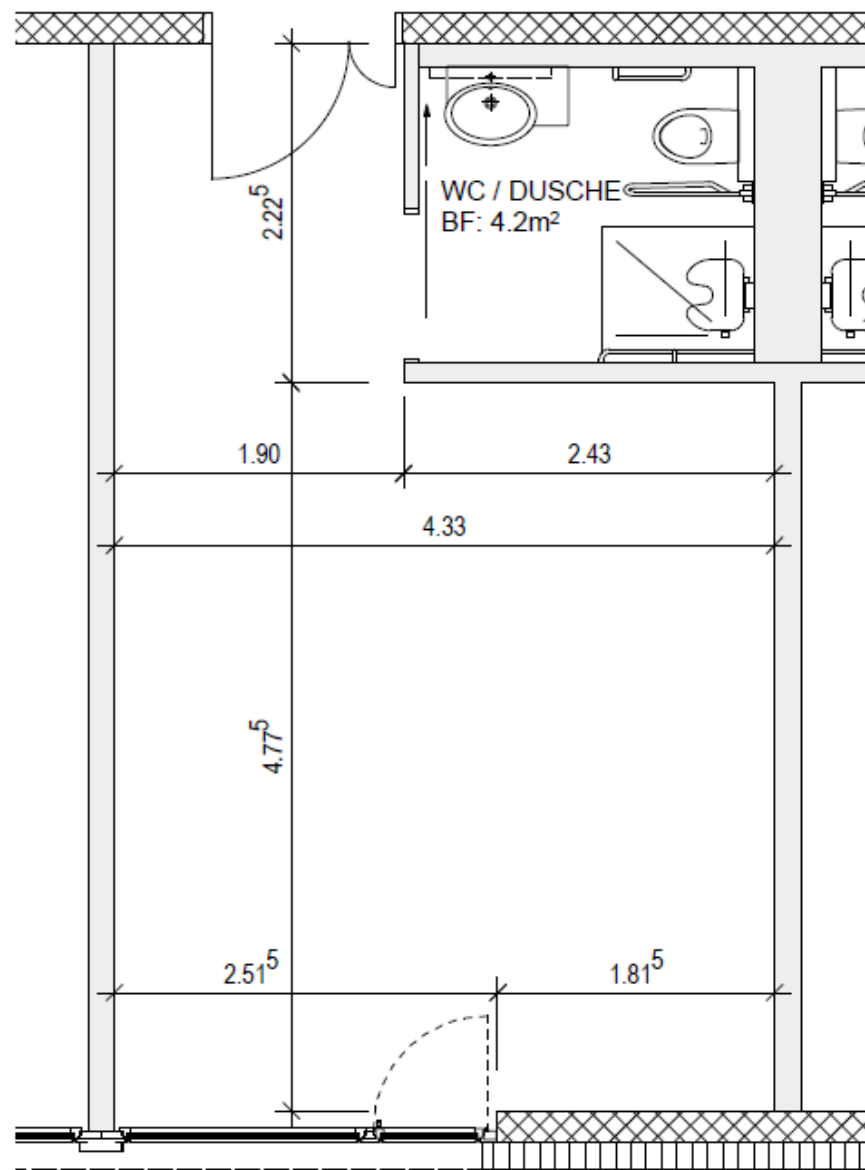
-  Typ A 1er Zimmer 22-25m<sup>2</sup>
-  Typ B 1er Zimmer mit Terrasse 25m<sup>2</sup>
-  Typ C 1er Zimmer mit Terrasse 36m<sup>2</sup>
-  Typ E 2er Zimmer 30m<sup>2</sup>
-  Typ F 2er Zimmer 40-44m<sup>2</sup>





Pflegeheim  
Bruggen

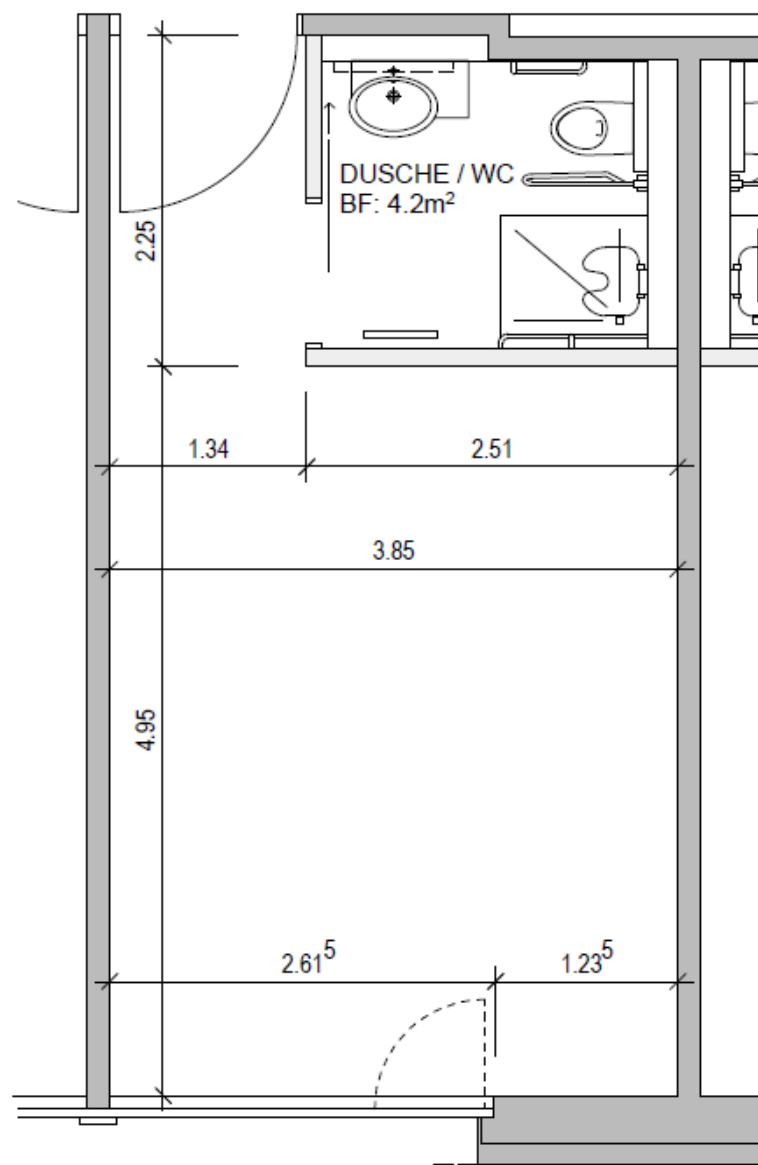
## Typ A 1er Zimmer Ost 22-25m<sup>2</sup>





Pflegeheim  
Bruggen

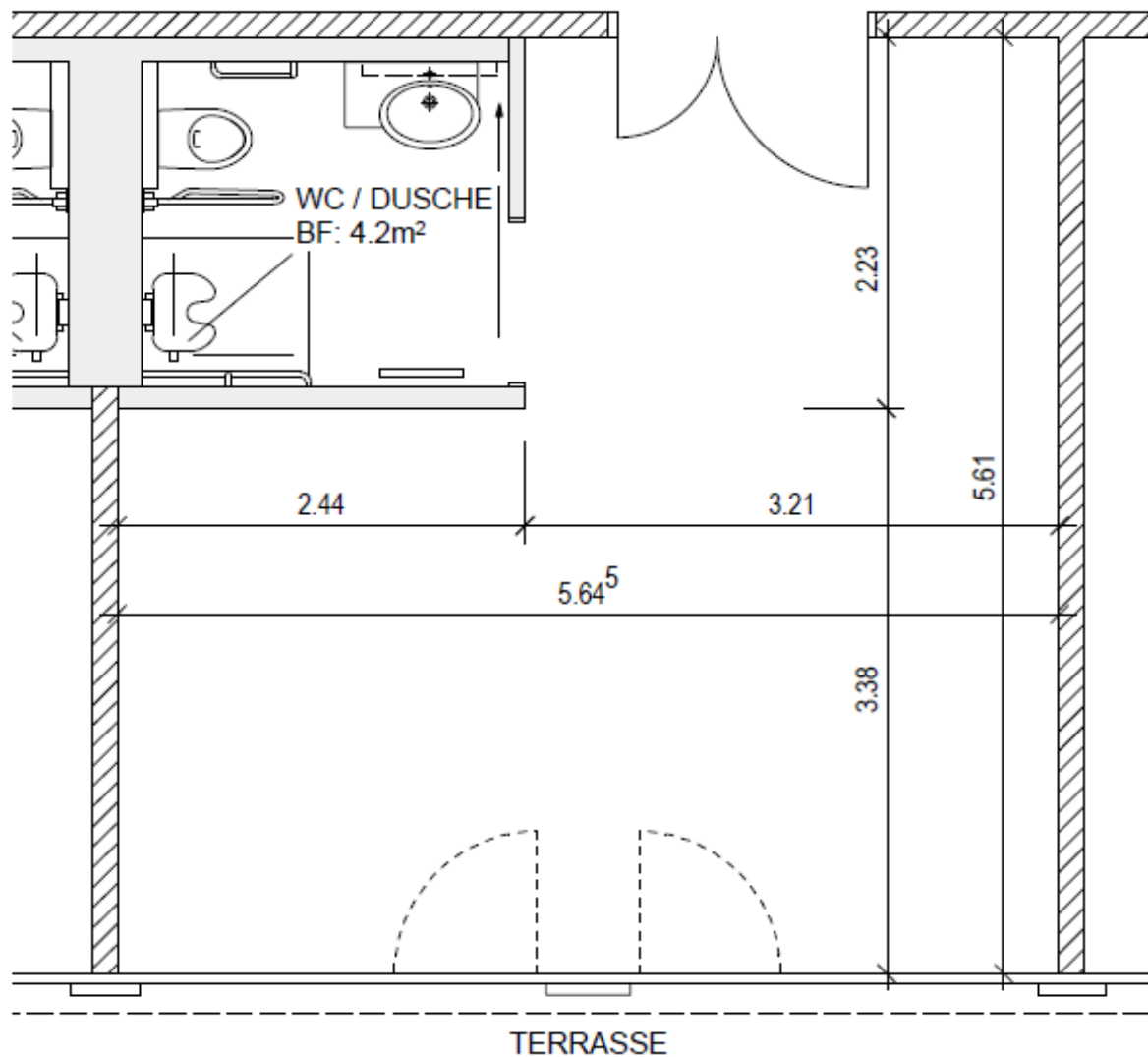
## Typ A 1er Zimmer West 22-25m<sup>2</sup>





Pflegeheim  
Bruggen

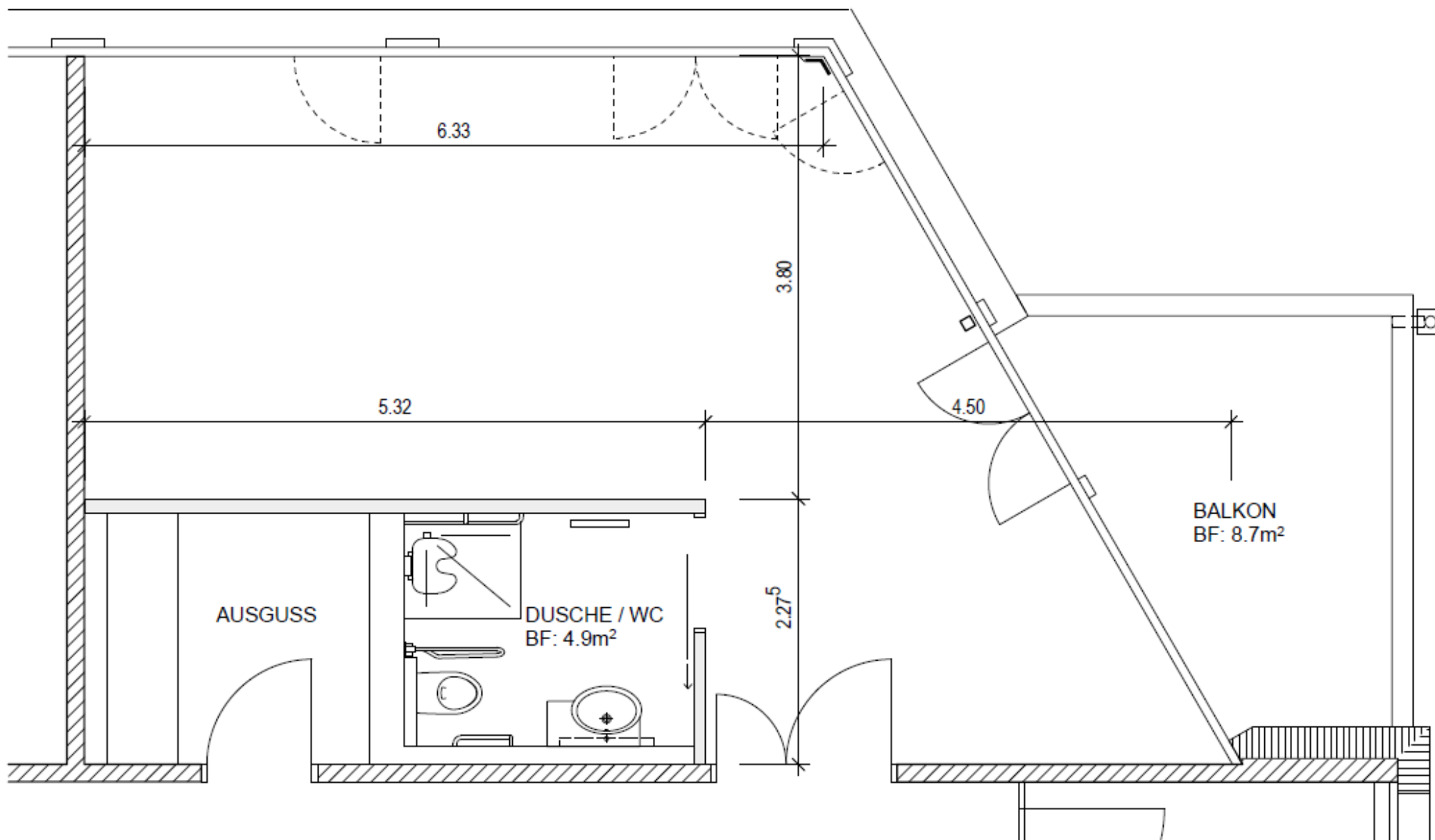
## Typ B 1er Zimmer mit Terrasse 25m<sup>2</sup>





Pflegeheim  
Bruggen

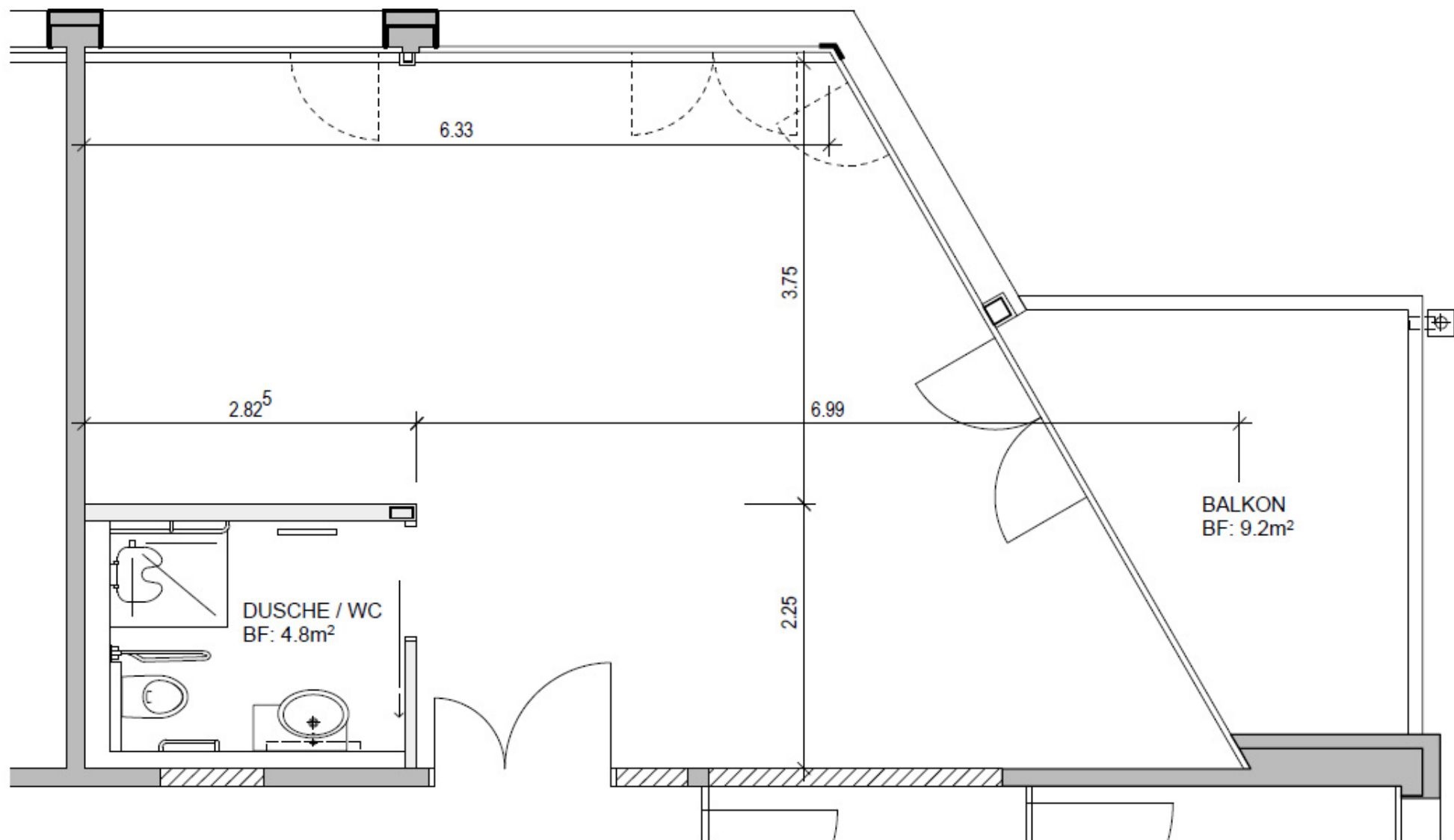
## Typ C 1er Zimmer mit Terrasse 36m<sup>2</sup>





Pflegeheim  
Bruggen

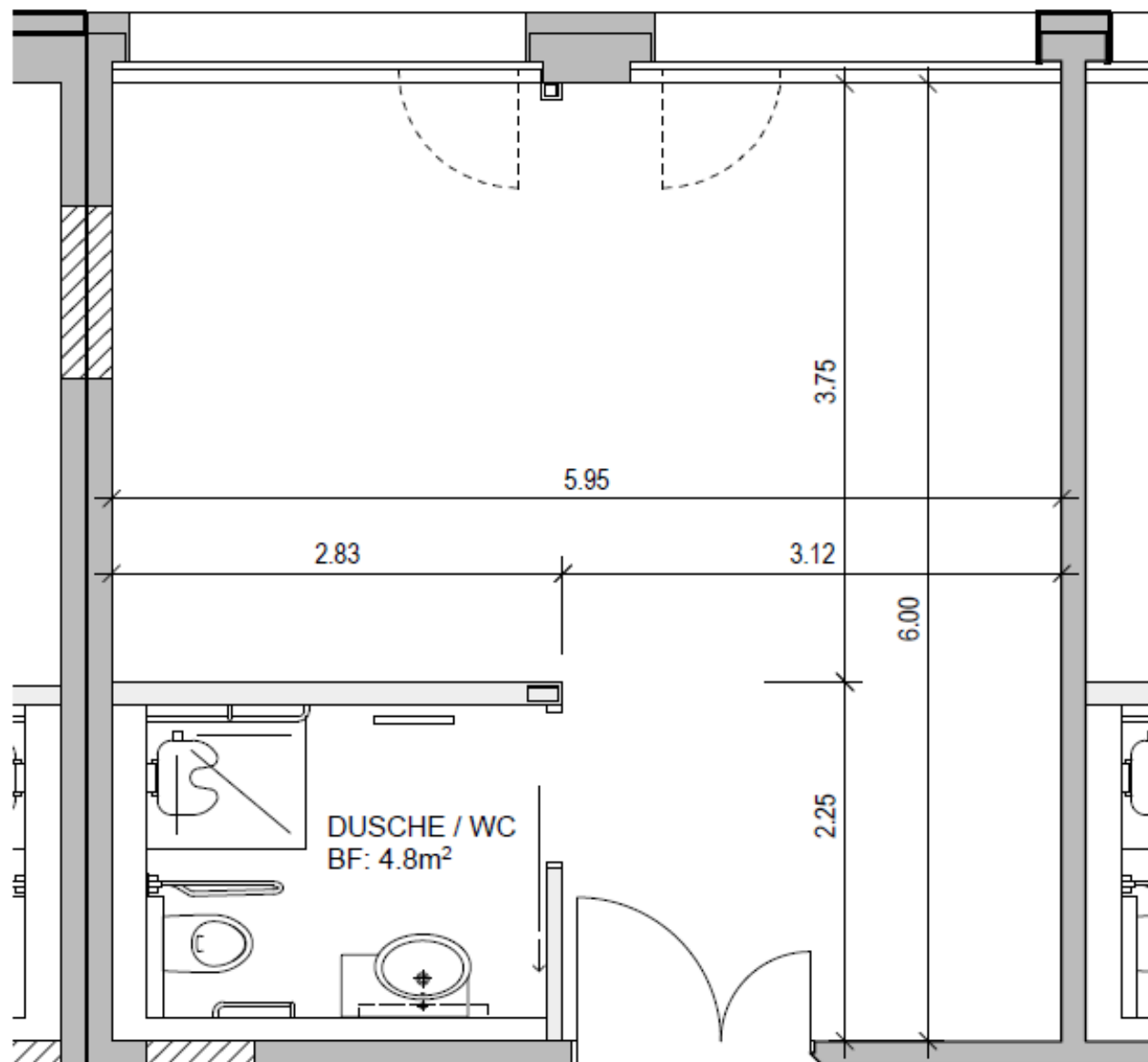
## Typ D 1er Zimmer mit Balkon 42m<sup>2</sup>





Pflegeheim  
Bruggen

## Typ E 2er Zimmer 30m<sup>2</sup>

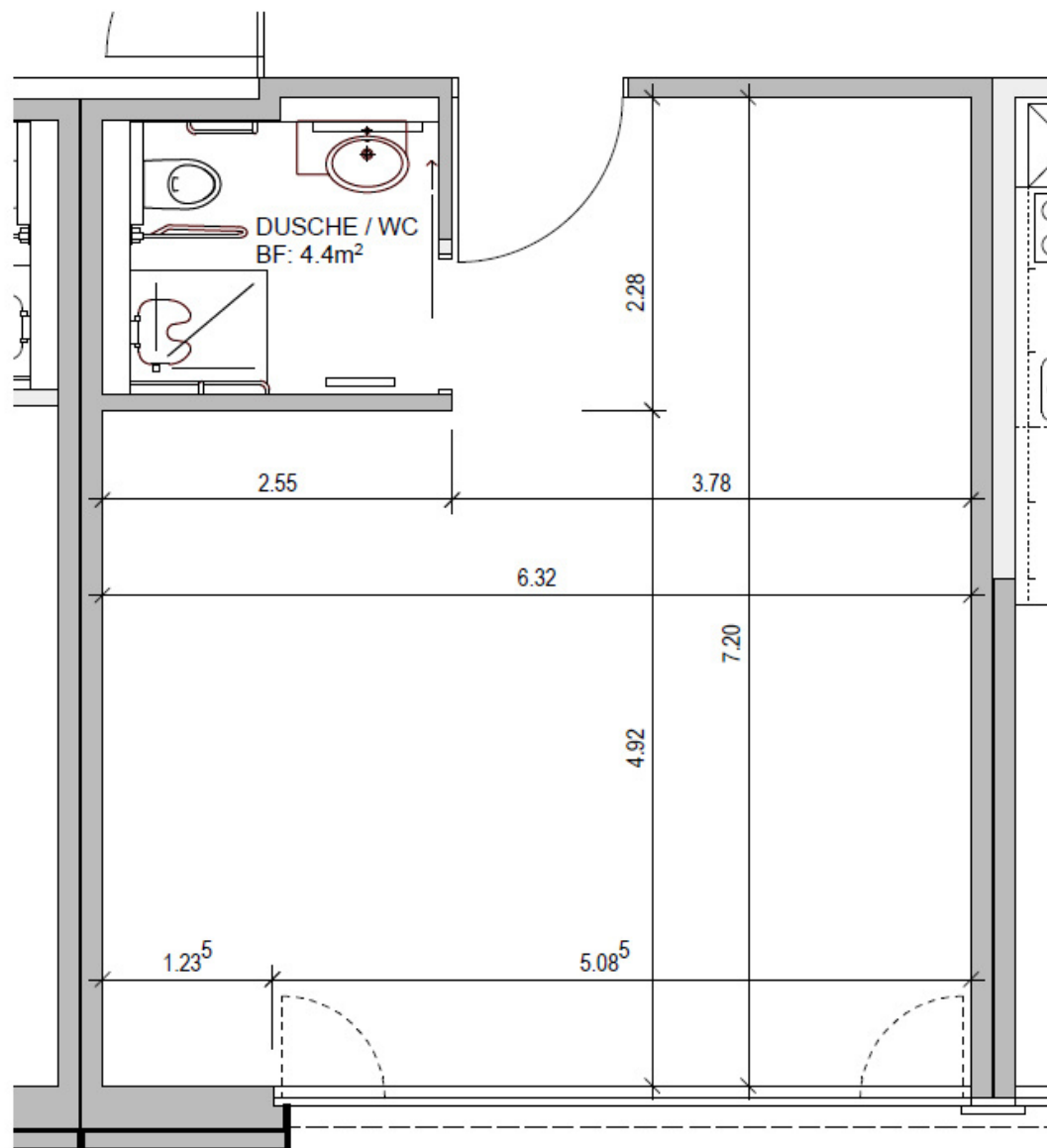






Pflegeheim  
Bruggen

## Typ F 2er Zimmer Süd 40-44m<sup>2</sup>





Pflegeheim  
Bruggen

## Typ F 2er Zimmer West 40-44m<sup>2</sup>

